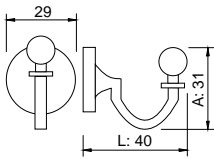


00	Cabides	1
	Cintres/Hangers/Perchas	

MODELO 089

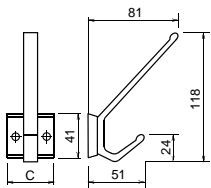


Cabide

Hangers
Cintre
Percha

Referência Reference	A mm	L mm	D mm	Acabamento Finish	uni
060008920	31	40	29	Lt Polido	50
060008941	31	40	29	Zk Bronze	50
060008943	31	40	29	Zk Niq. Mate	50

MODELO 10018.G

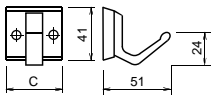


Cabide

Hangers
Cintre
Percha

Referência Reference	C mm	A mm	Informação Information	Acabamento Finish	uni
0600100181156	580	41	5 Cabides	Alum Natural	10
0600100181157	580	41	5 Cabides	Alum Dourado	10
060010018156	43	41	1 Cabide	Alum Natural	10
060010018163	43	41	1 Cabide	Alum Laca Branco	10
060010018356	340	41	3 Cabides	Alum Natural	10
060010018363	340	41	3 Cabides	Alum Laca Branco	10
060010018456	460	41	4 Cabides	Alum Natural	10
060010018463	460	41	4 Cabides	Alum Laca Branco	10

MODELO 10018.P

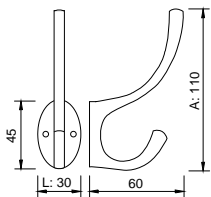


Cabide

Hangers
Cintre
Percha

Referência Reference	C mm	A mm	Informação Information	Acabamento Finish	uni
060010018556	43	41	1 Cabide	Alum Natural	25
060010018656	220	41	2 Cabides	Alum Natural	25

MODELO 129

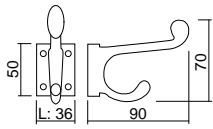


Cabide

Hangers
Cintre
Percha

Referência Reference	A mm	L mm	A2 mm	Acabamento Finish	uni
060012942	110	30	45	Zk Cromado	50
060012943	110	30	45	Zk Niq. Mate	50

MODELO 15.03

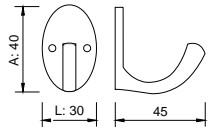


Cabide

Hangers
Cintre
Percha

Referência Reference	A mm	L mm	Acabamento Finish	uni
06001542	70	36	Zk Cromado	25

MODELO 27

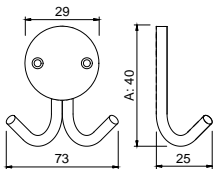


Cabide

Hangers
Cintre
Percha

Referência Reference	A mm	L mm	Acabamento Finish	uni
0600274540	40	30	Zk Latonado	50
0600274541	40	30	Zk Bronze	50
0600274542	40	30	Zk Cromado	50
0600274545	40	30	Zk Crom. Mate	50

MODELO 31

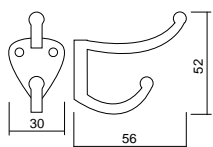


Cabide

Hangers
Cintre
Percha

Referência Reference	A mm	L mm	Acabamento Finish	uni
06003142	40	73	Zk Cromado	50

MODELO 32

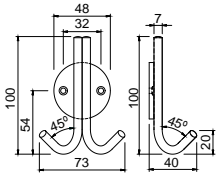


Cabide

Hangers
Cintre
Percha

Referência Reference	A mm	L mm	Acabamento Finish	uni
06003240	52	30	Zk Latonado	50
06003241	52	30	Zk Bronze	25
06003242	52	30	Zk Cromado	50
06003243	52	30	Zk Niq. Mate	50

MODELO 33003

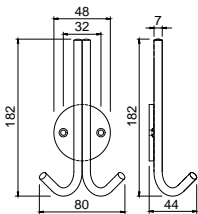


Cabide

Hangers
Cintre
Percha

Referência Reference	A mm	L mm	Acabamento Finish	uni
060033003	100	73	Inox	10

MODELO 33004

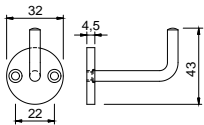


Cabide

Hangers
Cintre
Percha

Referência Reference	A mm	L mm	Acabamento Finish	uni
060033004	182	80	Inox	10

MODELO 33005

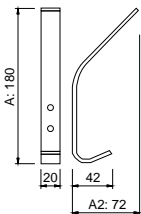


Cabide

Hangers
Cintre
Percha

Referência Reference	A mm	D mm	Acabamento Finish	uni
060033005	43	32	Inox	10

MODELO 33006

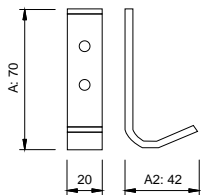


Cabide

Hangers
Cintre
Percha

Referência Reference	A mm	A2 mm	Acabamento Finish	uni
060033006	180	72	Inox	10

MODELO 33007

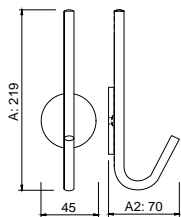


Cabide

Hangers
Cintre
Percha

Referência Reference	A mm	A2 mm	Acabamento Finish	uni
060033007	70	42	Inox	10

MODELO 33008



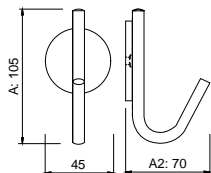
Cabide

Hangers
Cintre
Percha

Referência Reference	A mm	D mm	A2 mm	Acabamento Finish	uni
060033008	219	45	70	Inox	10



MODELO 33009



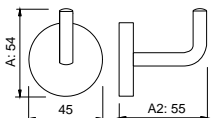
Cabide

Hangers
Cintre
Percha

Referência Reference	A mm	D mm	A2 mm	Acabamento Finish	uni
060033009	105	45	70	Inox	10



MODELO 33010



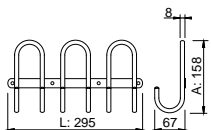
Cabide

Hangers
Cintre
Percha

Referência Reference	A mm	D mm	A2 mm	Acabamento Finish	uni
060033010	54	45	55	Inox	10



MODELO 33016



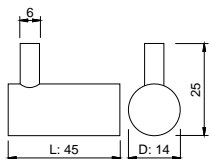
Cabide

Hangers
Cintre
Percha

Referência Reference	A mm	L mm	Acabamento Finish	uni
060033016	158	295	Inox	2



MODELO 33017



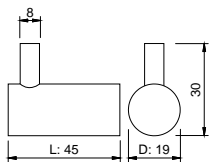
Cabide

Hangers
Cintre
Percha

Referência Reference	L mm	D mm	Acabamento Finish	uni
060033017	45	14	Inox	25



MODELO 33018

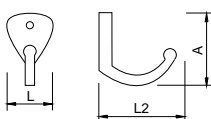


Cabide

Hangers
Cintre
Percha

Referência Reference	L mm	D mm	Acabamento Finish	uni
060033018	45	19	Inox	10

MODELO 34

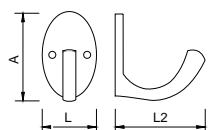


Cabide

Hangers
Cintre
Percha

Referência Reference	A mm	L mm	L2 mm	Acabamento Finish	uni
0600342541	30	18	30	Zk Bronze	100
0600342542	30	18	30	Zk Cromado	100
0600343541	35	20	35	Zk Bronze	50
0600343542	35	20	35	Zk Cromado	100

MODELO 38

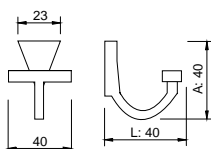


Cabide

Hangers
Cintre
Percha

Referência Reference	A mm	L mm	L2 mm	Acabamento Finish	uni
0600382542	30	21	30	Zk Cromado	100
0600383542	24	35	35	Zk Cromado	100

MODELO 39

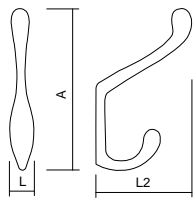


Cabide

Hangers
Cintre
Percha

Referência Reference	A mm	L mm	Acabamento Finish	uni
06003941	40	40	Zk Bronze	50
06003942	40	40	Zk Cromado	50

MODELO 51

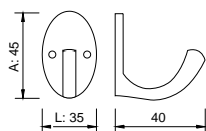


Cabide

Hangers
Cintre
Percha

Referência Reference	A mm	L mm	L2 mm	Acabamento Finish	uni
06005141	100	17	60	Zk Bronze	50
06005143	100	17	60	Zk Niq. Mate	50

MODELO 620

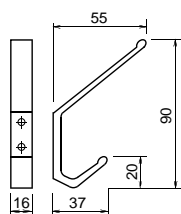


Cabide

Hangers
Cintre
Percha

Referência Reference	A mm	L mm	Acabamento Finish	uni
060062056	45	35	Alum Natural	36
060062057	45	35	Alum Dourado	36
060062062	45	35	Alum Laca Castanho	36
060062063	45	35	Alum Laca Branco	36

MODELO 623

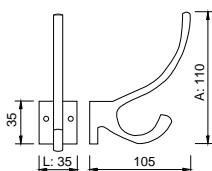


Cabide

Hangers
Cintre
Percha

Referência Reference	A mm	L mm	Acabamento Finish	uni
060062356	90	16	Alum Natural	36
060062357	90	16	Alum Dourado	36
060062361	90	16	Alum Laca Preto	36
060062362	90	16	Alum Laca Castanho	36
060062363	90	16	Alum Laca Branco	36
060062365	90	16	Inox	36

MODELO 625

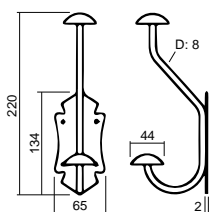


Cabide

Hangers
Cintre
Percha

Referência Reference	A mm	L mm	Acabamento Finish	uni
060062556	110	35	Alum Natural	12
060062557	110	35	Alum Dourado	12
060062563	110	35	Alum Laca Branco	12

MODELO 941



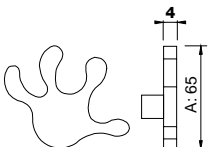
Cabide

Hangers
Cintre
Percha

Referência Reference	A mm	L mm	Acabamento Finish	uni
060094109	220	65	Fe Laca Preto	6



MODELO IN.14.011



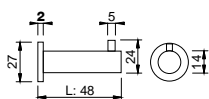
Cabide

Hangers
Cintre
Percha

Referência Reference	A mm	Acabamento Finish	uni
0600AM14011	65	Inox	4



MODELO IN.14.500



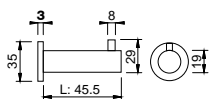
Cabide

Hangers
Cintre
Percha

Referência Reference	A mm	L mm	Acabamento Finish	uni
060014500	27	48	Inox	20



MODELO IN.14.501



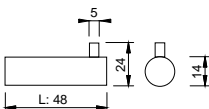
Cabide

Hangers
Cintre
Percha

Referência Reference	D mm	Acabamento Finish	uni
060014501	19	Inox	20



MODELO IN.14.505



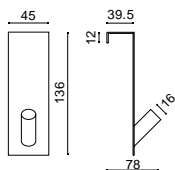
Cabide

Hangers
Cintre
Percha

Referência Reference	A mm	L mm	Informação Information	Acabamento Finish	uni
060014505	14	48	Profundidade - 33mm	Inox	10



MODELO IN.14.509.35

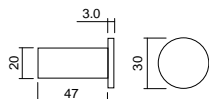


Cabide

Hangers
Cintre
Percha

Referência Reference	A mm	L mm	Acabamento Finish	uni
06001450935	136	45	Inox	1

MODELO IN.14.520

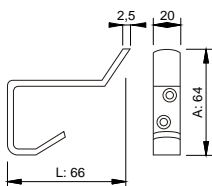


Cabide

Hangers
Cintre
Percha

Referência Reference	D mm	Acabamento Finish	uni
060014520	30	Inox	20

MODELO IN.14.530

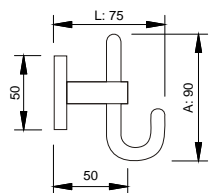


Cabide

Hangers
Cintre
Percha

Referência Reference	A mm	L mm	Acabamento Finish	uni
060014530	64	66	Inox	20

MODELO IN.14.539

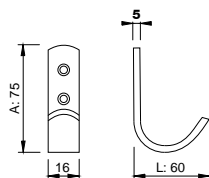


Cabide

Hangers
Cintre
Percha

Referência Reference	A mm	L mm	Acabamento Finish	uni
060014539	90	75	Inox	4

MODELO IN.14.541

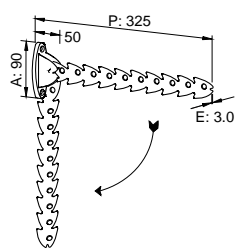


Cabide

Hangers
Cintre
Percha

Referência Reference	A mm	L mm	Acabamento Finish	uni
060014541	75	60	Inox	20

MODELO PESCKETTO



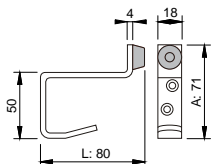
Cabide Articulado

Hangers Articulated
Cintre Articulé
Percha Articulado

Referência Reference	A mm	L mm	F kg	Acabamento Finish	uni
0600113AE	90	325	15	Fe Laca Branco	1
0600113AH	90	325	15	Fe Laca Amarelo	1
0600113AQ	90	325	15	Fe Laca Vermelho	1
0600113DA	90	325	15	Fe Laca Cinza	1
0600113DB	90	325	15	Fe Laca Azul	1

» Um peça suporta Peso até 15kg.

MODELO IN.14.529



Cabide com Batente

Hangers with stop
Cintre avec Butée
Percha con Batiente

Referência Reference	A mm	L mm	Acabamento Finish	uni
060014529	71	80	Inox	20